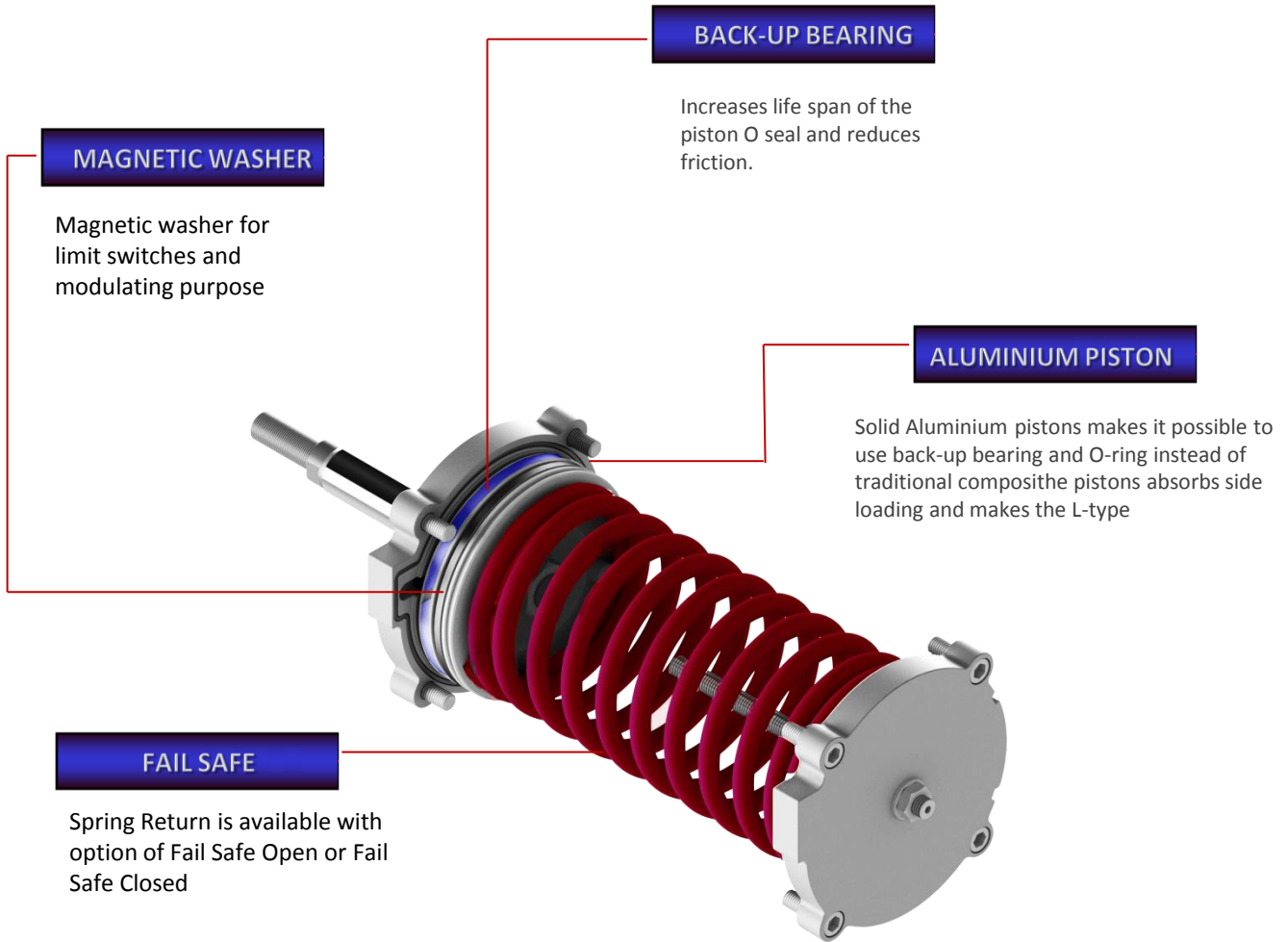




VALVE AUTOMATION
SINCE 1976

TECHNICAL SUMMARY L-TYPE



Material standard

Anodized Aluminium, Black
CNI, Chemically Nickel Impregnated.
Other treatments upon request.

Movement

Sizes

L-Type, DA : 100, 125, 160, 200, 250, 320.
SR : 125, 200, 250.

Drive Medium

Standard: Air (Dry or lubricated) or inert gases.
Options: Hydraulic (requires rebuilding)

Temperature Range

-40 to +212° F (Standard execution)
-13 to +482° F (High temp)
-58 to +140° F (Arctic temperature)

Standard Connections

Solenoid Valves – Namur

Operating Pressure

■30-150 PSI



VALVE AUTOMATION
SINCE 1976

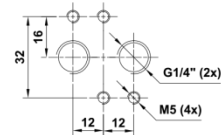
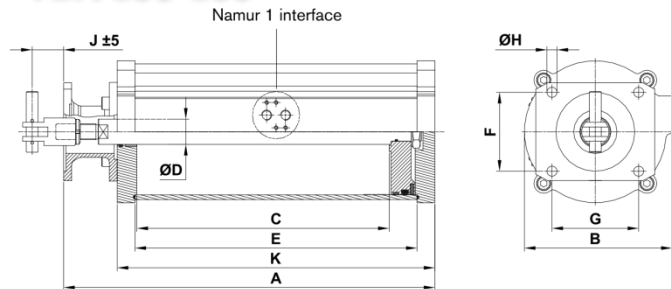
PNEUMATIC ACTUATORS: L-TYPE

TRUTORQ ACTUATOR SIZE 100/125/160/200
L-TYPE DOUBLE ACTING

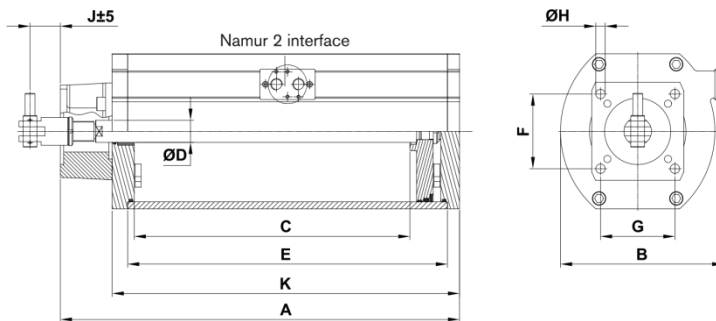


Namur 1 interface
VDI/VDE 3845

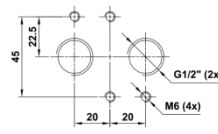
TDA 100-160



TDA 200



Namur 2 interface
VDI/VDE 3845



•Dimensions

Imperial	*	A	B	C	D	E	F	G	H	J	K
TT 100-90		8,39	4,65	3,54	0,79	4,88	2,05	2,40	0,43	0,98	6,22
TT 100-115		9,37	4,65	4,53	0,79	5,87	2,05	2,40	0,43	0,98	7,20
TT 100-140		10,25	4,65	5,51	0,79	6,81	2,05	2,40	0,43	0,98	8,19
TT 100-165		11,34	4,65	6,49	0,79	7,83	2,05	2,40	0,43	0,98	9,17
TT 125-115		11,22	5,79	4,53	1,26	6,02	2,05	2,40	0,43	0,98	7,79
TT 125-165		13,19	5,79	6,49	1,26	7,99	2,05	2,40	0,43	0,98	9,76
TT 160-115		11,22	7,40	4,52	1,26	6,02	2,05	2,40	0,43	0,98	7,80
TT 160-140		12,20	7,40	5,51	1,26	7,01	2,05	2,40	0,43	0,98	8,80
TT 160-165		13,19	7,40	6,49	1,26	7,99	2,05	2,40	0,43	0,98	9,76
TT 160-215		14,41	7,40	8,46	1,26	9,96	3,94	4,33	0,51	1,57	11,73
TT 160-270		16,57	7,40	10,63	1,26	12,13	3,94	4,33	0,51	1,57	13,90
TT 160-320		18,54	7,40	12,60	1,26	14,09	3,94	4,33	0,51	1,57	15,87
TT 200-215		17,00	9,66	8,46	1,57	11,42	3,94	4,33	0,51	1,57	13,31
TT 200-270		19,17	9,66	10,63	1,57	13,52	3,94	4,33	0,51	1,57	15,47
TT 200-320		21,14	9,66	12,60	1,57	15,55	3,94	4,33	0,51	1,57	17,44
TT 200-350		22,32	9,66	13,78	1,57	16,73	5,31	5,31	0,67	2,17	18,62
TT 200-400		25,08	9,66	15,75	1,57	18,70	6,30	6,30	0,83	2,17	20,59
TT 200-450		26,26	9,66	17,72	1,57	20,67	6,30	6,30	0,83	2,17	22,56
TT 200-550		30,98	9,66	21,65	1,57	24,61	6,30	6,30	0,83	2,17	26,50

*Hole pattern towards valve according to customers requirement

•Basic Operating Detail

Drive Medium = Air (Dry or lubricated); Non corrosive Gas; Light Hydraulic Oil

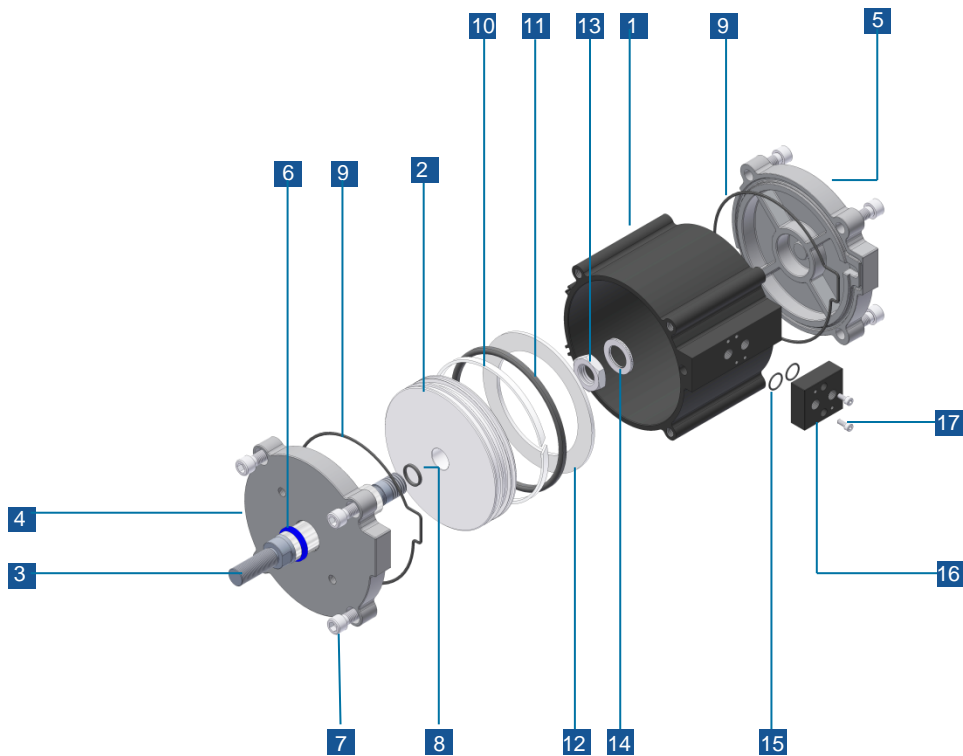
Temperature = -40 to +212°F. High & Low temp versions available

www.TruTorq-us.com



VALVE AUTOMATION
SINCE 1976

PNEUMATIC ACTUATORS: L-TYPE PART LIST



Ref No	Description	Qty	Material Std Unit	Comments
1	Body	1	Aluminium Anodized	Alt. CNI
2	Piston	1	Aluminium	
3	Piston rod	1	C45 Double chrome	
4	Front endcover	1	Aluminium Powder coated	Alt. CNI
5	Back endcover	1	Aluminium Powder coated	Alt. CNI
6	Lip seal	1	Polyurethane	
7	Endcover bolt	8	Stainless steel	
8	Piston rod O-ring	1	Buna Nitrile	Alt. Viton/Silicone/EPDM
9	Endcover O-ring	2	Buna Nitrile	Alt. Viton/Silicone/EPDM
10	Piston Back-up bearing	1	POM	
11	Piston O-ring	1	Buna Nitrile	Alt. Viton/Silicone/EPDM
12	Piston magnet	1	Ferrite	
13	Nut	1	Stainless steel	
14	Nord lock	1	Steel	
15	Namur plate O-ring	2	Buna Nitrile	Alt. Viton/Silicone/EPDM
16	Namur plate	1	Aluminium Anodized	Alt. CNI
17	Namur plate bolt	2	Stainless steel	

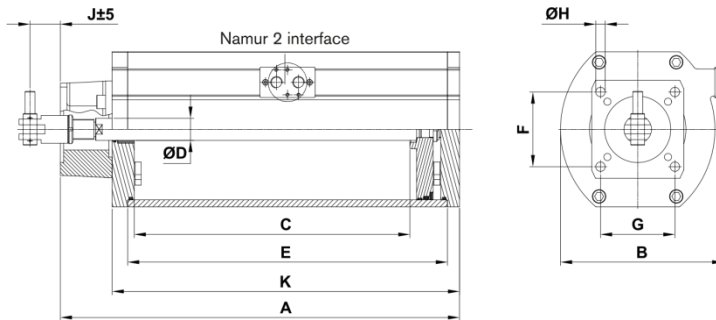


VALVE AUTOMATION
SINCE 1976

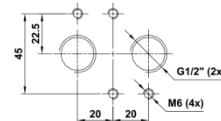
PNEUMATIC ACTUATORS: L-TYPE

TRUTORQ ACTUATOR SIZE 100/125/160/200
L-TYPE DOUBLE ACTING

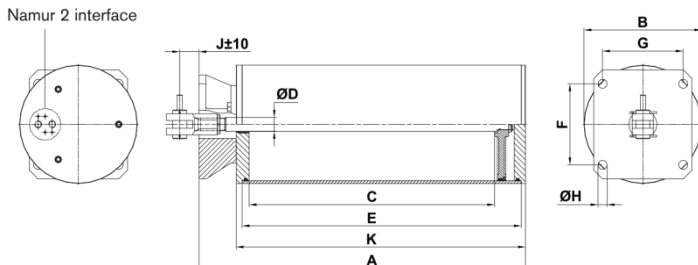
TDA 250



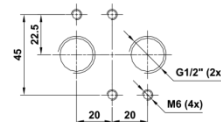
Namur 2 interface
VDI/VDE 3845



TDA 320



Namur 2 interface
VDI/VDE 3845



•Dimensions

Imperial	*	A	B	C	D	E	F	G	H	J	K
TT 250-350		22,60	11,65	13,78	15,75	16,93	5,31	5,31	0,67	2,17	18,90
TT 250-400		25,35	11,65	15,75	15,75	18,90	5,31	5,31	0,67	2,17	20,87
TT 250-450		27,32	11,65	17,72	15,75	20,87	6,30	6,30	0,83	2,17	22,83
TT 250-500		29,29	11,65	19,69	15,75	22,83	6,30	6,30	0,83	2,17	24,80
TT 250-575		32,24	11,65	22,64	15,75	25,79	9,06	9,06	1,02	2,17	27,76
TT 250-630		34,41	11,65	24,80	15,75	27,95	7,87	7,87	0,83	2,17	29,92
TT 250-800		41,10	11,65	31,50	15,75	34,65	9,06	9,06	1,02	2,17	36,61
TT 320-500		28,78	13,23	19,69	1,57	23,46	9,06	9,06	1,02	2,17	24,60
TT 320-575		31,73	13,23	22,64	1,57	26,42	9,06	9,06	1,02	2,17	27,56
TT 320-700		36,65	13,23	27,56	1,57	31,34	9,06	9,06	1,02	2,17	32,48
TT 320-715		37,56	13,23	28,15	1,57	31,93	9,06	9,06	1,02	2,17	33,07
TT 320-800		40,59	13,23	31,50	1,57	35,28	9,06	9,06	1,02	3,15	36,42
TT 320-915		45,12	13,23	36,02	1,57	39,80	9,06	9,06	1,02	3,15	40,94
TT 320-1030		49,65	13,23	40,55	1,57	44,33	9,06	9,06	1,02	3,15	45,47

*Hole pattern towards valve according to customers requirement

•Basic Operating Detail

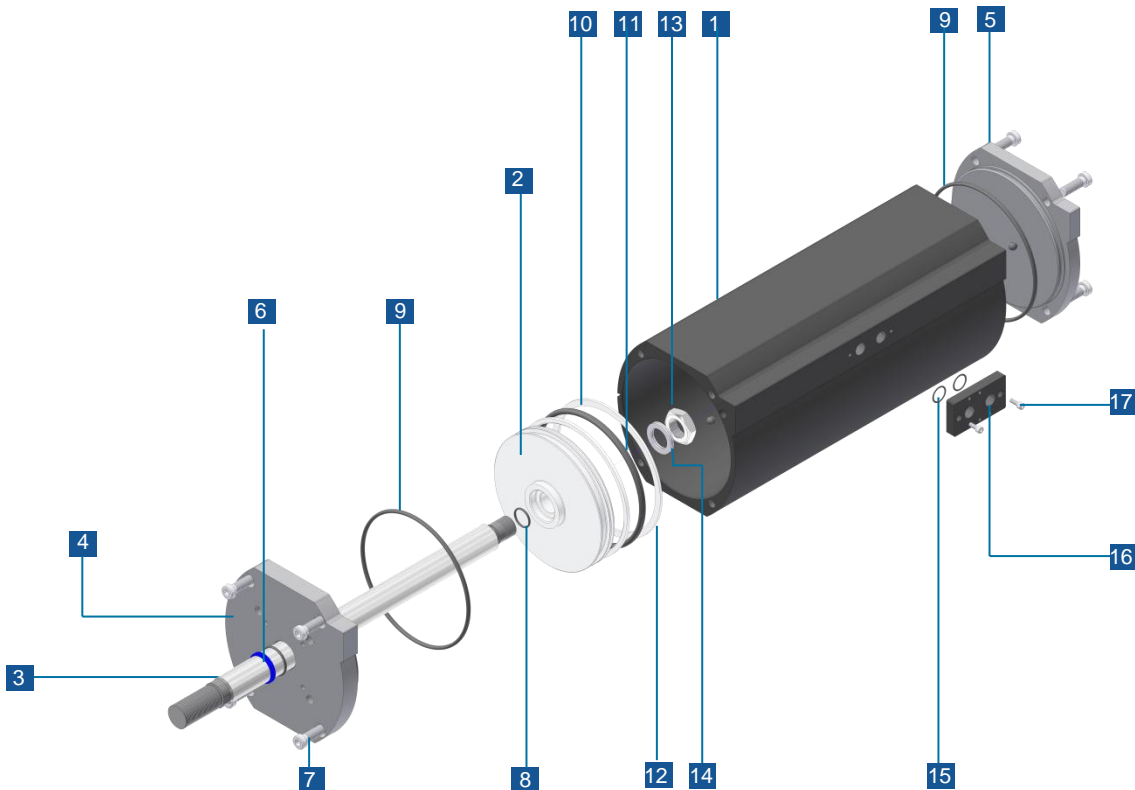
Drive Medium = Air (Dry or lubricated); Non corrosive Gas; Light Hydraulic Oil

Temperature = -40 to +212°F. High & Low temp versions available



VALVE AUTOMATION
SINCE 1976

PNEUMATIC ACTUATORS: L-TYPE PART LIST



Ref No	Description	Qty	Material Std Unit	Comments
1	Body	1	Aluminium Anodized	Alt. CNI
2	Piston	1	Aluminium	
3	Piston rod	1	C45 Double chrome	
4	Front endcover	1	Aluminium Powder coated	Alt. CNI
5	Back endcover	1	Aluminium Powder coated	Alt. CNI
6	Lip seal	1	Polyurethane	
7	Endcover bolt	8	Stainless steel	
8	Piston rod O-ring	1	Buna Nitrile	Alt. Viton/Silicone/EPDM
9	Endcover O-ring	2	Buna Nitrile	Alt. Viton/Silicone/EPDM
10	Piston Back-up bearing	1	POM	
11	Piston O-ring	1	Buna Nitrile	Alt. Viton/Silicone/EPDM
12	Piston magnet	1	Ferrite	
13	Nut	1	Stainless steel	
14	Nord lock	1	Steel	
15	Namur plate O-ring	2	Buna Nitrile	Alt. Viton/Silicone/EPDM
16	Namur plate	1	Aluminium Anodized	Alt. CNI
17	Namur plate bolt	2	Stainless steel	