



VALVE AUTOMATION  
SINCE 1976

## TECHNICAL SUMMARY MGO

### COMPACT DESIGN

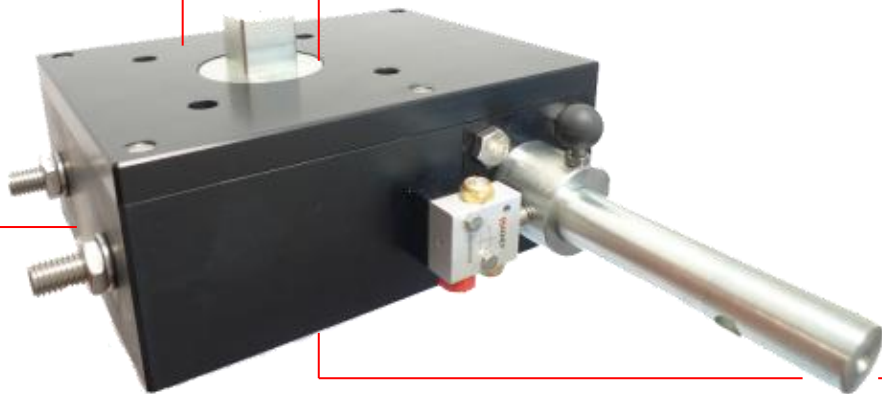
Unique combined cover/flange makes the MGE a more compact option than standard flange executions.

### DUAL BEARING SYSTEM

The dual "POM" worm wheel bearings absorb the adverse side loading. The dual bearings also ensure no metal to metal contact thus providing low friction travel.

### SOLID CONSTRUCTION

Housing machined from solid bar Aluminium gives a stronger construction and a surface without pores.



### INSERT SLEEVE

Same system as on E-type Actuators with changeable insert, makes the MGE flexible and suitable for most applications.



#### Material standard

Anodized Aluminium, Black.  
CNI, Chemically Nickel Impregnated.  
Other treatments upon request.

#### Movement

0-90 Degrees

#### End Stop Adjustment

Dual end stop adjustment .  
Over travel, +5 degree Open & Closed

#### Sizes

MGE300, MGE600, MGE1200 & MGE2000

#### Torque Output

1630 to 17900 in. lbs

#### Temperature Range

-40 to +212°F (Standard execution)  
-13 to +482° F (High temp)  
-58 to +140° F (Arctic temperature)

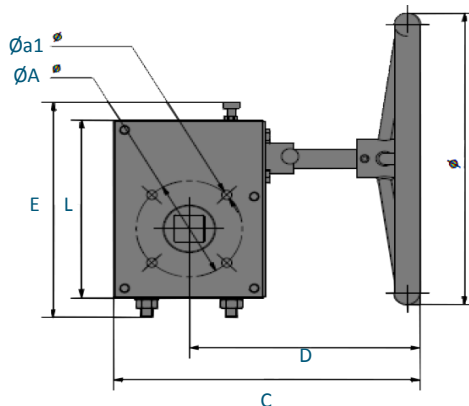
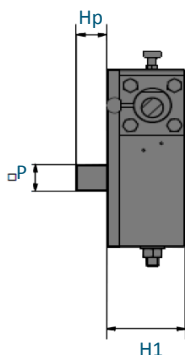
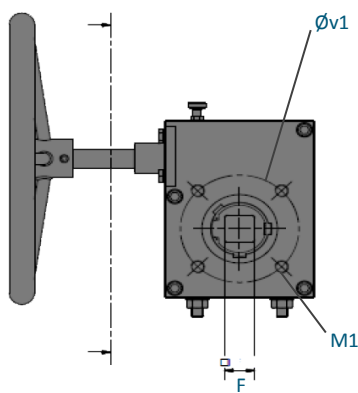
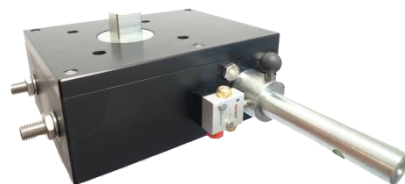
#### Standard Connections

ISO 5211 (90 ), DIN 79 (45).



VALVE AUTOMATION  
SINCE 1976

# MANUAL GEAR OVERRIDE: MGO



## ■ Dimensions

■ Dimensions		VALVE SIDE			ACTUATOR SIDE									
IMPERIAL	ISO5211	F	Øv1	M1 (unc)	ISO5211	P	ØA	Øa1	C	D	E	L	H1	Hp
MGE300	F07	*	70	5/16-18	F07	0,551	70	0,33	9,01	7,08	7,04	5,50	2,68	0,71
MGE600	F10/F12	*	102	3/8-16	F10	0,866	102	0,41	10,97	8,06	9,01	7,59	2,68	0,91
MGE1200	F12/F14	*	125	1/2-13	F12	1,06/1,42	125	0,49	14,24	10,73	10,70	9,12	3,66	1,07
MGE2000	F14	*	140	5/8-11	F12	1,06/1,42	125	0,49	16,99	12,11	13,33	11,61	3,66	1,77

\*Depending on insert sleeve used

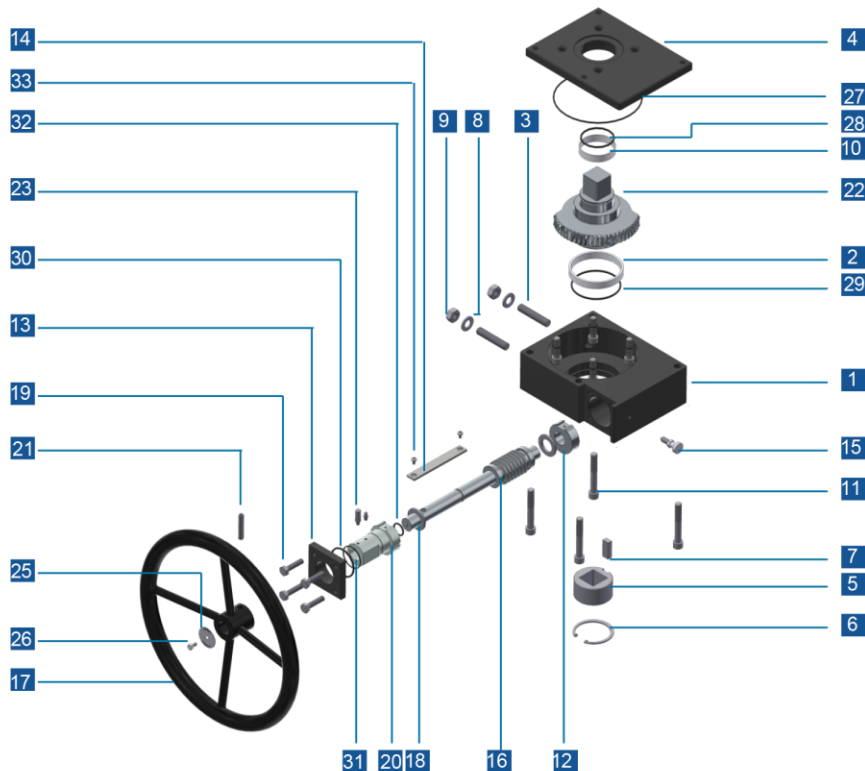
Torque	INPUT TORQUE (in. lbs)	OUTPUT TORQUE (in. lbs)	Overall Weight (lbs)	Handwheel Ø
MGE300	270	1630	4,3	8,19
MGE600	485	4745	7,7	9,83
MGE1200	130	9735	15,8	13,78
MGE2000	130	17900	24,2	13,78

Standard dimensions for gears, other executions on request



VALVE AUTOMATION  
SINCE 1976

# MANUAL GEAR OVERRIDE: MGO



## Part List

Ref No	Description	Quantity	Material Std Unit
1	Gear housing	1	Aluminum
2	Worm wheel bearing	1	POM
3	End stop adjustment screws	2	Stainless Steel
4	Cover	1	Aluminum
5	Insert	1	Stainless Steel
6	Circlip	1	Stainless Steel
7	Insert sleeve key	1	steel
8	Spring washer	2	Stainless Steel
9	Nuts	2	Stainless Steel
10	Worm wheel bearing	1	POM
11	Fixing cover screws	4	Stainless Steel
12	Back sleeve	1	Carbon steel
13	Closing flange	1	Aluminum
14	Sleeves connection plates	1	Stainless Steel
15	Engaging lever	1	Polymer/stainless steel
16	Worm gear	1	Carbon steel
17	Hand wheel	1	Steel
18	Rolling bearing	2	Stainless Steel
19	Closing flange screws	4	Stainless Steel
20	Front sleeve	1	Carbon steel
21	Hand wheel pin	1	steel
22	Worm wheel	1	Carbon steel
23	Clutching/declutching lever	1	Polymer/stainless steel
24	Nuts	1	Stainless Steel
25	Direction indicator plate	1	Stainless Steel
26	Fixing plate screw	1	Stainless Steel
27	Cover O-ring	1	NBR
28	Worm wheel O-ring	1	NBR
29	Worm wheel O-ring	1	NBR
30	Flange O-ring	1	NBR
31	Flange bearing	1	POM
32	Worm gear O-ring	1	NBR
33	Plate screws	2	Stainless Steel